

## Sharing your information

Your information will only be disclosed to those who have a genuine need to know and who agree to keep your information confidential. For your direct care we often share information with:

- NHS hospitals and clinics
- GPs
- Social care

Following the principles within the General Data Protection Regulation (GDPR), MCH processes your data for purposes of:

- provision of health or social care or treatment
- medical diagnosis
- preventative or occupational medicine
- management of health or social care systems and services, carried out by, or under the supervision of health professional or another person, who in the circumstances owes a duty of confidentiality under an enactment or rule of law

## Who to contact

Dementia Support

t: 01634 583423

[medch.dementiasupportservice@nhs.net](mailto:medch.dementiasupportservice@nhs.net)

Our privacy notice is available at [medwaycommunityhealthcare.nhs.uk/privacy/](https://www.medwaycommunityhealthcare.nhs.uk/privacy/)

If you would like to view or request a copy of your patient record, please email [medch.dataprotection@nhs.net](mailto:medch.dataprotection@nhs.net) or call 01634 334640. In most instances this service is free and we aim to provide the requested information within 1 calendar month. More information can be found by visiting:

[medwaycommunityhealthcare.nhs.uk/contact-us/information-about-me/](https://www.medwaycommunityhealthcare.nhs.uk/contact-us/information-about-me/)

Medway Community Healthcare provides a wide range of high quality community health services for Medway residents; from community nurses and health visitors to speech and language therapists and out of hours urgent care.

## Customer care

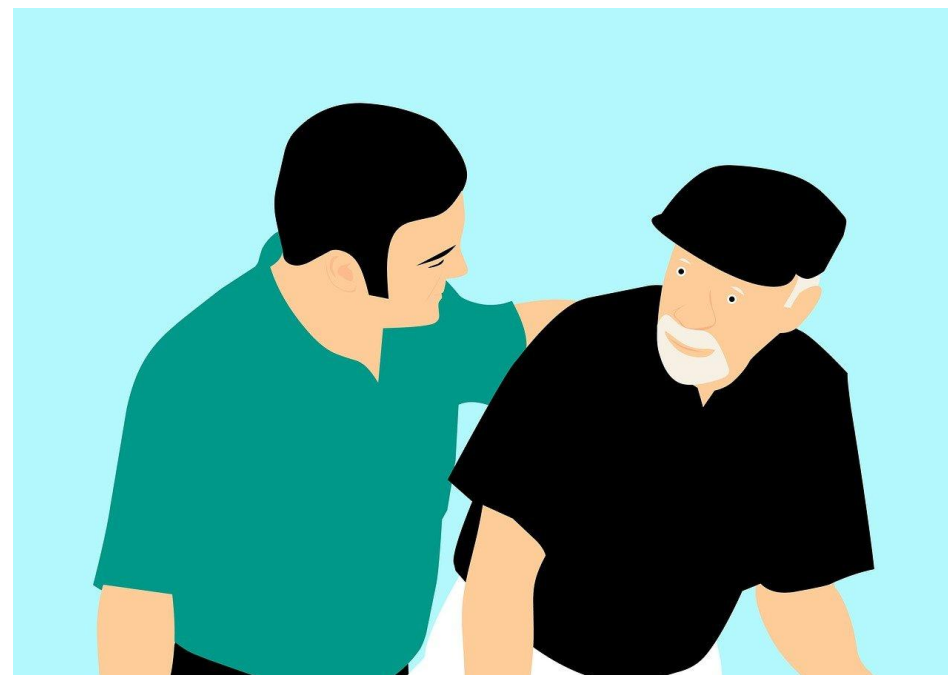
Please send any comments about Medway Community Healthcare services to: -  
Customer care coordinator  
Medway Community Healthcare  
MCH House, Bailey Drive, Gillingham, Kent, ME8 0PZ  
t: 0300 1233444  
[medch.customercare@nhs.net](mailto:medch.customercare@nhs.net)

All contact will be treated confidentially  
This information can be made available in other formats and languages. Please email [medch.communications@nhs.net](mailto:medch.communications@nhs.net)

Ref: MCH 745



## Memory Assessment Dementia Crisis Team



Medway Community Healthcare CIC providing services on behalf of the NHS  
Registered office: MCH House, Bailey Drive, Gillingham, Kent ME8 0PZ  
Tel: 01634 337593  
Registered in England and Wales, Company number: 07275637



## Why we are doing a memory assessment

It has been noticed that you have some issues with your memory. This may be impacting on your life or the life of a family member.

If you do not wish to consent, please advise your nurse.

If you do not wish to know your results but would still like investigations completed, please let us know.

## What is a memory assessment for

The memory assessment is for a possible diagnosis of a cognitive disorder of the mind (possible dementia).

## What will happen during the memory assessment

Working closely with you we will complete the following:

- Blood test if needed: - this could identify an alternative reason to why your experiencing memory loss
- We will check you for anxiety and depression, to rule out mental health
- We will complete a small memory test, to see how you score
- We will ask your family to complete and score a document called IQ Code. This is to see if they feel there is any change to consider.
- CT scan – if required.

Once completed your nurse will discuss the findings and information from our assessment with the Mental Health team. We will then get a potential diagnosis and see if you meet the criteria for a treatment plan.

## What this means for you

### Pro's

- Possible medication
- Benefits available
- Council Tax
- Future Planning

### Implications

- DVLA – would need to be reassessed for driving
- Power of Attorney (POA) – need to be put in place
- Insurance – life & travel premiums may be higher and / or may not be able to get insurance
- Lifelong diagnosis of progressive disorder

## After diagnosis what will happen

- Your nurse will discuss the results from the consultant.
- Provide you with information around diagnosis and how to live well
- A letter will be sent to your GP
- A referral will be made to the Dementia Co-ordinators, to support you getting the services and benefits you are entitled to in place

## Research

If you would like to participate in research around dementia, please let us know