

Medway Community Healthcare CIC - Carbon Reduction Plan

Supplier name: Medway Community Healthcare CIC

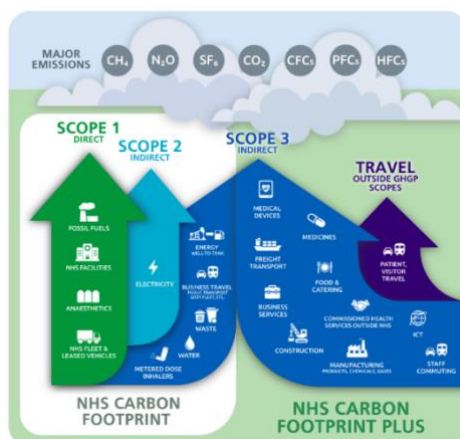
Publication date: 31/01/2025

Commitment to Achieving Net Zero

Medway Community Healthcare CIC is committed to achieving Net Zero emissions by 2040 for the emissions we control directly and 2045 for the emissions we can influence, in line with the NHS Long Term Plan Commitments.

Baseline Emissions Footprint

Baseline emissions are a record of the greenhouse gases that have been produced in the past and were produced prior to the introduction of any strategies to reduce emissions. Baseline emissions are the reference point against which emissions reduction can be measured.



Baseline Year: 2017-2018

Additional details relating to the baseline emissions calculations.

Scope 1 emissions (gas consumption) was sourced from figures collated by an external provider who manage our energy contracts.

Scope 1 fleet emissions figures were compiled from fuel card spend (all 2017/18 vehicles were diesel)

Scope 2 emissions (electricity consumption) was sourced from figures collated by an external provider who manage our energy contracts.

Please note, historic baseline deviates from the requirements under this measure as there are no 2017-2018 scope 3 emissions reporting due to scope 3 emissions not being captured at that time.

Baseline year emissions:

EMISSIONS	
Scope 1	421.5 (tCO ₂ e) Included Sources: Gas – 327.75 (tCO ₂ e) Fleet – 93.75 (tCO ₂ e)
Scope 2	352.4 (tCO ₂ e) Included sources: Electricity – 352.4 (tCO ₂ e)
Scope 3	Not included
Total Emissions	773.9 (tCO ₂ e)

Current Emissions Reporting

Reporting Year: 2023-2024	
Additional details relating to the reporting year 2023/24 emissions calculations.	
Scope 1 Gas consumption emissions were sourced from data provided by an external provider who manage our energy contracts.	
Scope 1 Fleet emissions were calculated using fuel card expenditure. Separate calculations were conducted for diesel and petrol due to their differing emission factors, with the totals combined to derive a single figure.	
Scope 2 Electricity consumption emissions were derived from data supplied by the external provider managing our energy contracts.	
Scope 3 Business travel emissions were calculated by extracting business mileage claims from our electronic expenses system for the reporting period. For each vehicle, emissions were determined by referencing vehicle registration details on the DVLA website and applying the relevant real-world uplift factor to ensure accuracy.	
Scope 3 Upstream transportation and distribution emissions were calculated by downloading non-pay costs, splitting into the applicable upstream spending categories and the relevant carbon emissions factors applied to those categories.	
Scope 3 Waste emissions were based on data from the external provider managing our waste consortium.	
Scope 3 Employee commuting emissions were estimated using FTE (full-time equivalent) figures. It was assumed that all FTEs commute to the office five days per week. The average commute distance of 13.5 miles was derived from guidance available at Transport Statistics Great Britain 2022 . An emissions factor for an average petrol vehicle was used (0.28676 from the Government's GHG Conversion Factors 2023). Calculations were based on 1,226.65 FTEs and 224 working days.	
Scope 3 Downstream transportation and distribution were recorded as zero for the reporting year, as the organisation does not produce any physical products.	
EMISSIONS	
Scope 1	231.83 (tCO₂e) Included sources: Gas – 200.98(tCO ₂ e) Fleet – 30.85(tCO ₂ e)
Scope 2	108.25 (tCO₂e) Included sources: Electricity – 108.25 (tCO ₂ e)
Scope 3 (Included Sources)	5332.39 (tCO₂e) Included sources: Business Travel – 166.72 (tCO ₂ e) Upstream Transportation and distribution – 3,031.37 (tCO ₂ e) Waste generated in operations – 6.9 (tCO ₂ e) Employee Commuting – 2,127.4 (tCO ₂ e) Downstream transportation and distribution – N/A
Total Emissions	5672.47 (tCO₂e)



Previous Emissions Reporting

Reporting Year: 2022-2023	
Additional details relating to the reporting year 2022/23 emissions calculations	
Scope 1 Gas consumption emissions were sourced from data provided by an external provider who manage our energy contracts.	
Scope 1 Fleet emissions were calculated using fuel card expenditure. Separate calculations were conducted for diesel and petrol due to their differing emission factors, with the totals combined to derive a single figure.	
Scope 2 Electricity consumption emissions were derived from data supplied by the external provider managing our energy contracts.	
Scope 3 Business travel emissions were calculated by extracting business mileage claims from our electronic expenses system for the reporting period. For each vehicle, emissions were determined by referencing vehicle registration details on the DVLA website and applying the relevant real-world uplift factor to ensure accuracy.	
Scope 3 Upstream Transportation and Distribution emissions were calculated by downloading non-pay costs, splitting into the applicable upstream spending categories and the relevant carbon emissions factors applied to those categories.	
Scope 3 Waste emissions were based on data from the external provider managing our waste consortium.	
Scope 3 Employee commuting emissions were estimated using FTE (full-time equivalent) figures. It was assumed that all FTEs commute to the office five days per week. The average commute distance of 13.5 miles was derived from guidance available at Transport Statistics Great Britain 2022 . An emissions factor for an average petrol vehicle was used (0.28676 from the Government's GHG Conversion Factors 2023). Calculations were based on 1,226.65 FTEs and 224 working days.	
Scope 3 Downstream transportation and distribution were recorded as zero for the reporting year, as the organisation does not produce any physical products.	
EMISSIONS	
Scope 1	337.82 (tCO₂e) Included sources: Gas – 305.75 (tCO ₂ e) Fleet – 32.07 (tCO ₂ e)
Scope 2	134.6 (tCO₂e) Included sources: Electricity – 134.6 (tCO ₂ e)
Scope 3 (Included Sources)	5257.27 (tCO₂e) Included sources: Business Travel – 156.15 (tCO ₂ e) Upstream Transportation and distribution – 2,797.62 (tCO ₂ e) Waste generated in operations – 9.6 (tCO ₂ e) Employee Commuting – 2,293.9 (tCO ₂ e) Downstream transportation and distribution – NA
Total Emissions	5729.69 (tCO₂e)



Emissions Reduction Targets

To continue our progress to achieving Net Zero, we have adopted the following carbon reduction targets:

We project that carbon emissions will decrease over the next five years to 3684.54 (tCO₂e) by 2030. This is a reduction of 31%.

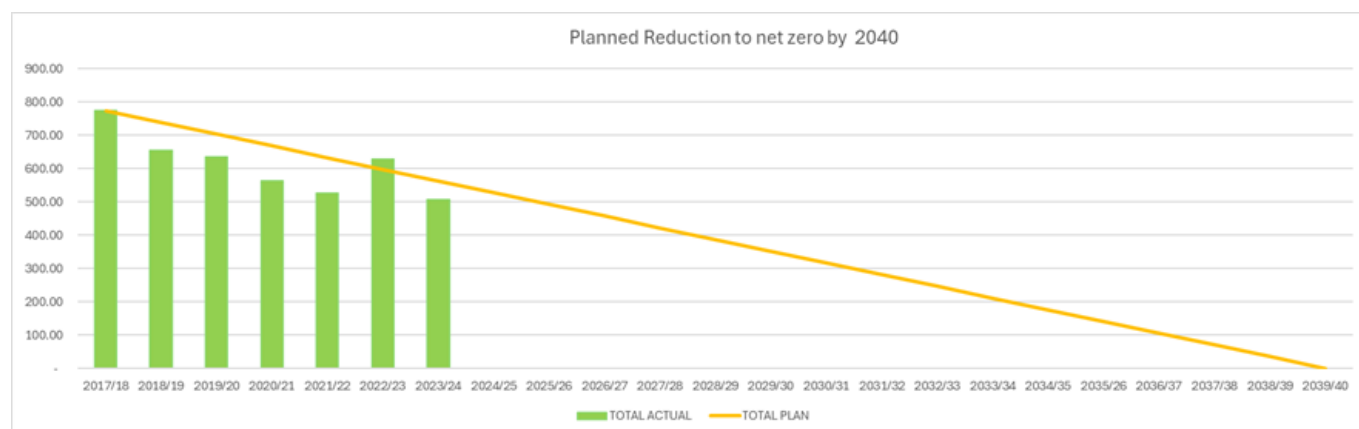
Our reduction to date for scopes 1 and 2 show a decrease of 433.1 (tCO₂e) and a 55.96% reduction which is well ahead of the target level. Our reduction for scopes 1, 2 and 3 for 22/23 and 23/24 shows a decrease of 57.22 (tCO₂e) and a 1% reduction.

Intensity Ratios

We aim to ensure that our footprint measurements are not distorted by fluctuations in employee numbers or business growth. To demonstrate that our footprint is decreasing in proportion to employee numbers, we have included intensity ratios. These ratios allow us to show carbon reduction, even as the business size changes. The table below presents the carbon emissions based on FTEs.

	Baseline 2017/18	2022/23	2023/24
Total employees (FTE)	1095	1275.99	1226.65
Scope 1 and 2 emissions (tCO ₂ e)	773.9	472.42	340.8
(tCO ₂ e) per employee (scope 1 and 2 only)	0.71	0.37	0.277
Scope 1, 2 and 3 emissions (tCO ₂ e)	NA (Scope 3 not calculated)	5729.69	5672.47
(tCO ₂ e) per employee (scope 1, 2 and 3)	NA	4.49	4.62

Progress against these targets can be seen in the graph below (for Scopes 1 and 2):



Carbon Reduction Projects

Completed Carbon Reduction Initiatives

The following environmental management measures and projects have been completed or implemented since the 2017/18 baseline. The carbon emission reduction achieved through these schemes currently equates to 433.1 (tCO₂e) (for Scope 1 and 2), representing a 55.96% reduction against the 2017/18 baseline. These measures will remain in effect when performing the contract.



Some carbon reduction projects which have been completed so far include, but are not limited to:

- Increasing LED lighting across all sites.
- Transitioning to 100% green energy
- Launching and implementing our Green Plan, encompassing environmental and sustainability projects and targets.
- Introducing green office practices, such as promoting a paperless office, setting printers to double-sided black-and-white printing by default and closely monitoring printing consumption.
- Phasing out single-use plastics where applicable.
- Using filtered mains water in coolers instead of large plastic water containers.
- Procuring local suppliers where possible. In 2023-24, approximately 58% of MCH's non-pay spend was within ME postcodes.
- Encouraging staff to work remotely, where possible, to reduce travel and energy consumption.
- Promoting hybrid and electric vehicles to staff through our lease car scheme.
- Adding three hybrid vehicles to our fleet.
- Communicating with staff around national green days and maintaining a network of Green Champions to embed sustainability across MCH. Sustainability initiatives are discussed in forums such as the AGM, Ask Exec and other internal meetings to drive continuous improvement.
- Switching to lower-carbon fire extinguishers, with a rolling programme to replace these at all sites.

Future Carbon Reduction Initiatives:

In the future, we aim to implement further measures, including:

- Completing the roll-out of LED lighting across all sites.
- Enhancing waste segregation and increasing recycling rates across all sites.
- Launching a food project offering lower-carbon alternatives for patients to choose from.
- Developing and implementing a sustainable Transport and Travel Strategy.
- Expanding the use of virtual appointments and telemedicine where appropriate.
- Installing EV chargers on-site for use by staff and patients.
- Continuing to monitor and reduce energy consumption, encouraging the switching off of electronics when not in use.
- Investing in renewable energy sources, such as the installation of solar panels at selected sites.
- Increasing employee awareness and providing training on sustainability and carbon emissions.
- Incentivising sustainable choices, recognising and rewarding staff who adopt sustainable practices.
- Encouraging water conservation and installing water-saving devices where applicable.
- Using virtual meetings as the default mode, unless face-to-face meetings are necessary, to minimise travel emissions.
- Procuring eco-friendly products and sustainable furniture made from recycled materials and sourcing suppliers whose sustainability goals align with ours.



Declaration and Sign Off

This Carbon Reduction Plan has been completed in accordance with PPN 06/21 and associated guidance and reporting standard for Carbon Reduction Plans. Emissions have been reported and recorded in accordance with the published reporting standard for Carbon Reduction Plans and the GHG Reporting Protocol corporate standard⁴ and uses the appropriate [Government emission conversion factors for greenhouse gas company reporting](#)⁵. Scope 1 and Scope 2 emissions have been reported in accordance with SECR requirements, and the required subset of Scope 3 emissions have been reported in accordance with the published reporting standard for Carbon Reduction Plans and the Corporate Value Chain (Scope 3) Standard⁶. This Carbon Reduction Plan has been reviewed and signed off by the Board of Directors.

Signed on behalf of Medway Community Healthcare CIC



.....
Date: ...31 January 2025.....

