

## WOOLWAY, Nina (MEDWAY COMMUNITY HEALTHCARE)

---

**From:** MCH TICC team <medwaycommunityhealthcare@gmail.com>  
**Sent:** 16 June 2020 11:56  
**To:** WOOLWAY, Nina (MEDWAY COMMUNITY HEALTHCARE)  
**Subject:** All you need to know about TICC in Medway!



## Welcome to the MCH TICC newsletter

The recent global health crisis has impacted each and every one of us. During the outbreak, TICC partners number one priority was, as always, to care for its patients and professionals. In order to ensure everyone's safety, some of the TICC activities had to be put on hold, but that doesn't mean we have stopped! We have continued to develop the project, and support our patients in the community.

So here is a highlight of what we have been up to

- Recruitment
- Virtual induction programme
- Tissue viability self care
- Developing our road map
- Planning for new teams



## Recruitment

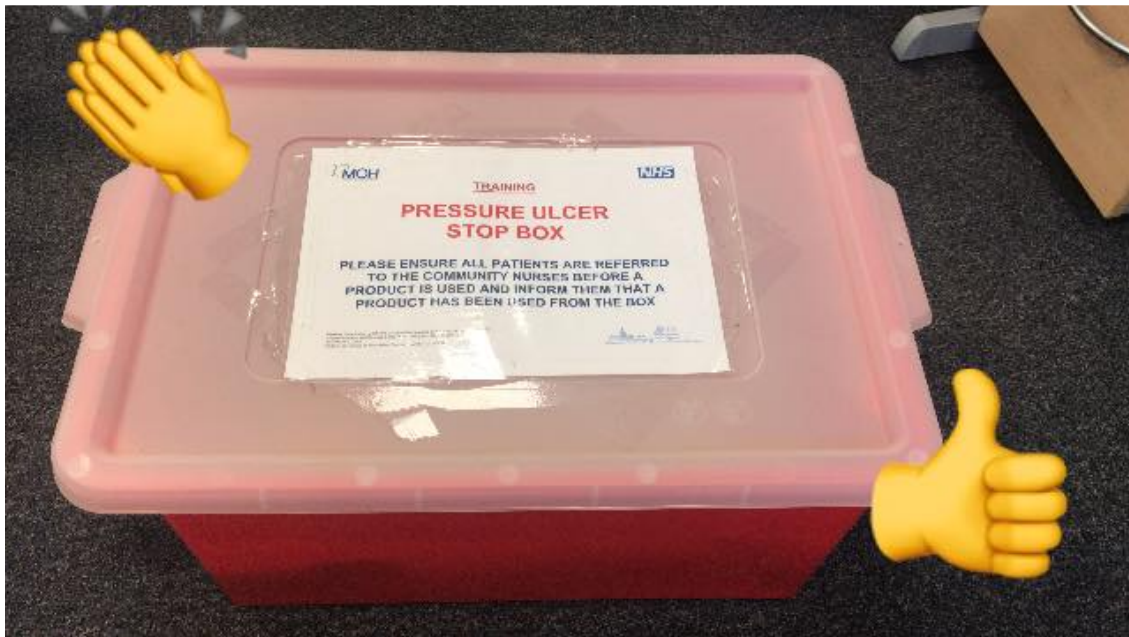
We have actively been advertising for new members of our teams, and to date have successfully recruited 11 new starters from March to present. These new members of staff are unregistered and registered nurses and a new lead coach! We have more interviews lined up for the weeks ahead through Microsoft Teams and Skype.



## Virtual induction programme

We have developed a virtual induction programme, utilising e-learning and webinars to support our new starters, along with socially distanced peer supervision. We are currently working with Public World and Buurtzorg to explore the possibilities of working together to provide virtual learning to our new teams and coaches going forward.

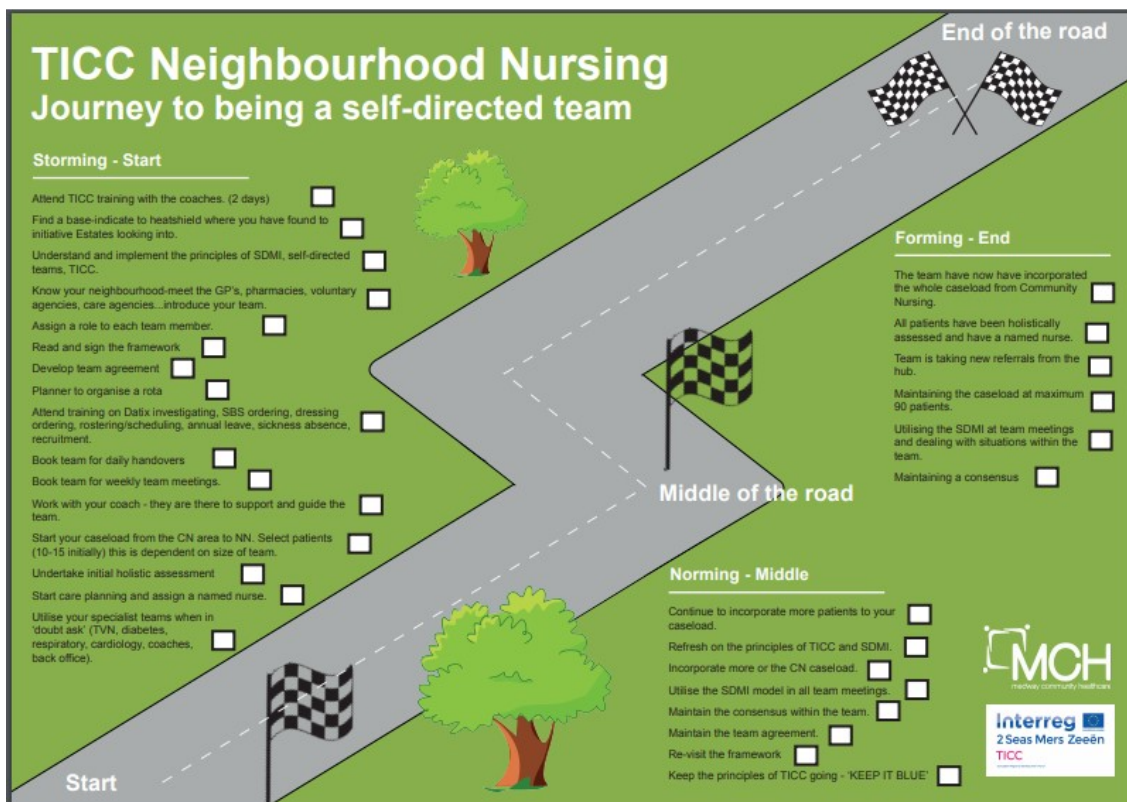




## Tissue viability self-care

Our tissue viability team have supported our nursing teams in the promotion of self-care for wounds and leg ulcers by devising self-care leaflets for patients and education for our teams. As a result, we now have a higher level of patients self-managing at home. We are now looking at virtual consultations with patients to enable them to confidently self-care knowing that their nursing teams are at the end of a phone with any concerns.





## Developing our new road map

We have devised a road map for our new teams as a step by step guide to becoming a self-managing team, support their transition and to reassure the teams that they have support to guide them through.







## Planning for new teams

We are busy working on postcode mapping ready for the roll out of our next two teams which we are hoping to go live in September 2020. Alongside this we are transforming our wound clinic / leg ulcer clinics and tissue viability team in to a self-managing team which we are also aiming roll out from September.



For more information, or to talk to someone about TICC, please email [susanne.wilson@nhs.net](mailto:susanne.wilson@nhs.net) or [nina.woolway@nhs.net](mailto:nina.woolway@nhs.net)



*Copyright © 2020 Medway Community Healthcare, All rights reserved.*

You wanted us to keep in touch with you about the TICC project. If you want to opt out of receiving this newsletter in future, please click 'Unsubscribe' below.

**Our mailing address is:**

Medway Community Healthcare  
MCH House  
Bailey Drive  
Gillingham, Kent ME8 0PZ  
United Kingdom

[Add us to your address book](#)

Want to change how you receive these emails?

You can [update your preferences](#) or [unsubscribe from this list](#).

