

CASCADE Virtual Final Conference: 2nd February 2023

CASCADE FACILITIES

Philip Brighton / Tracy Webb

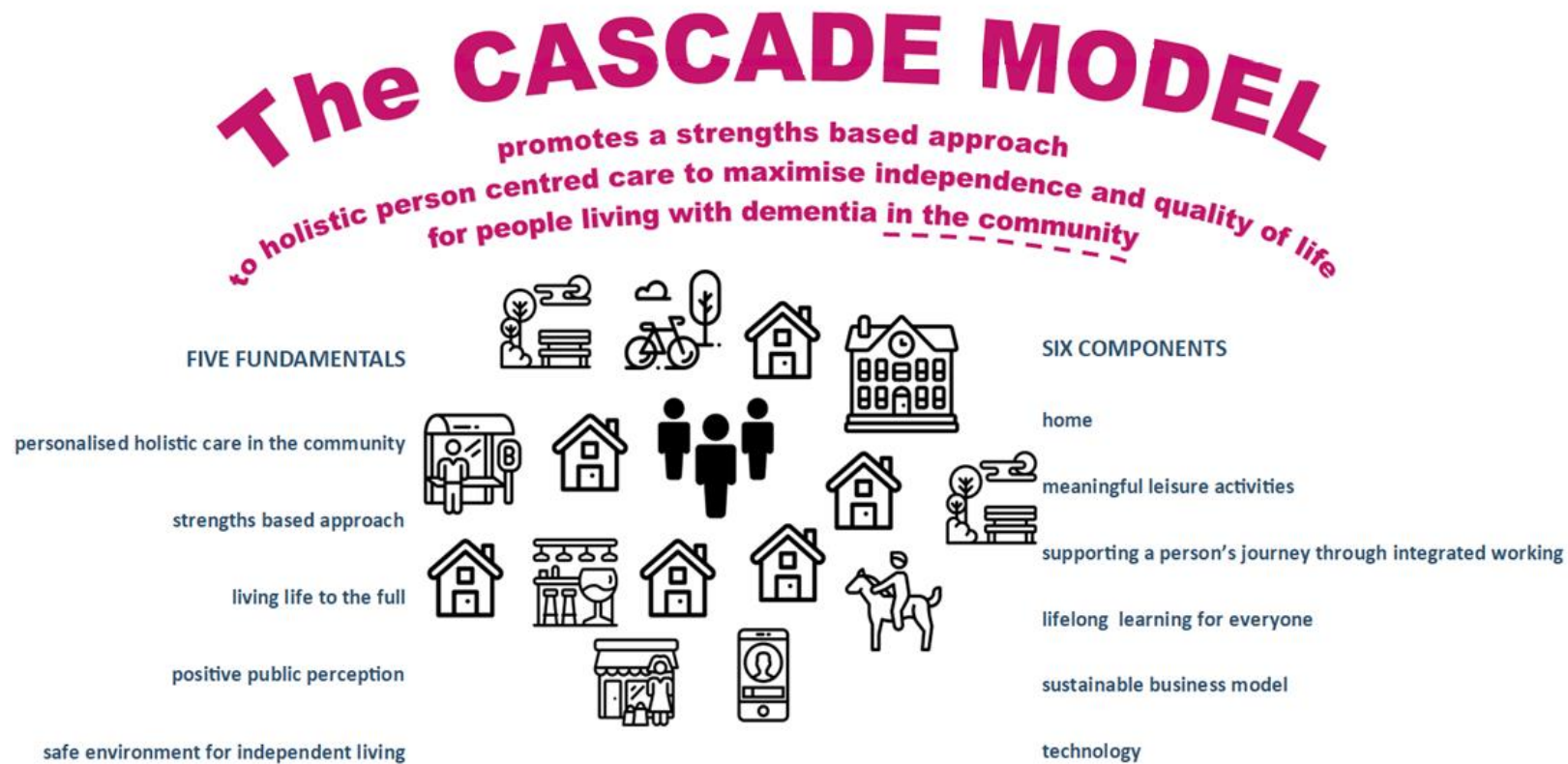
Consultant Community Geriatrician / Assistant Director Planned Services
East Kent Hospital University / Medway Community Healthcare

Dementia Friendly Design

- **Use an open-plan layout that is easy to understand, orientated around a garden.**
- **Minimise the amount of long, artificially lit internal corridors.**
- **Make sure there is natural daylight and views from the building.**
- **Ensure there is easy access to secure gardens.**
- **Use 'landmarks', such as plants or artwork, to help people navigate their way around.**
- **Clearly mark all glass doors; glass may not be seen by people with dementia.**
- **Use clear and attractive signage in a bold face with good contrast between the text and the background.**
- **Ensure that toilets are designed so that someone with dementia is able get assistance without causing embarrassment.**
- **Use contrasting colours – white or magnolia do not help with way-finding. Toilet seats that are of a contrasting colour to the walls and rest of the toilet are easier to see if someone has visual problems.**
- **Do not use sparkly materials, stripes, dark patches or mats on floors – and avoid any variation in flooring.**
- **Mark the edge of each step on any stairs.**
- **Create a homely, familiar environment; this increases the sense of security and comfort. Try to create a safe environment without it being institutional.**
- **Don't use swirly patterns on floors or walls; for dementia sufferers they can appear to be moving.**

CASCADE Model of Care

ent Fund



CASCADE process

- Collaborative working
 - International partners and experts
 - Local expertise
- Working with Health & Care systems...
 - Estates
 - Procurement
 - Commissioning
 - CQC

CASCADE Model of Care

- Home is best...



Harmonia

Interreg 
2 Seas Mers Zeeën

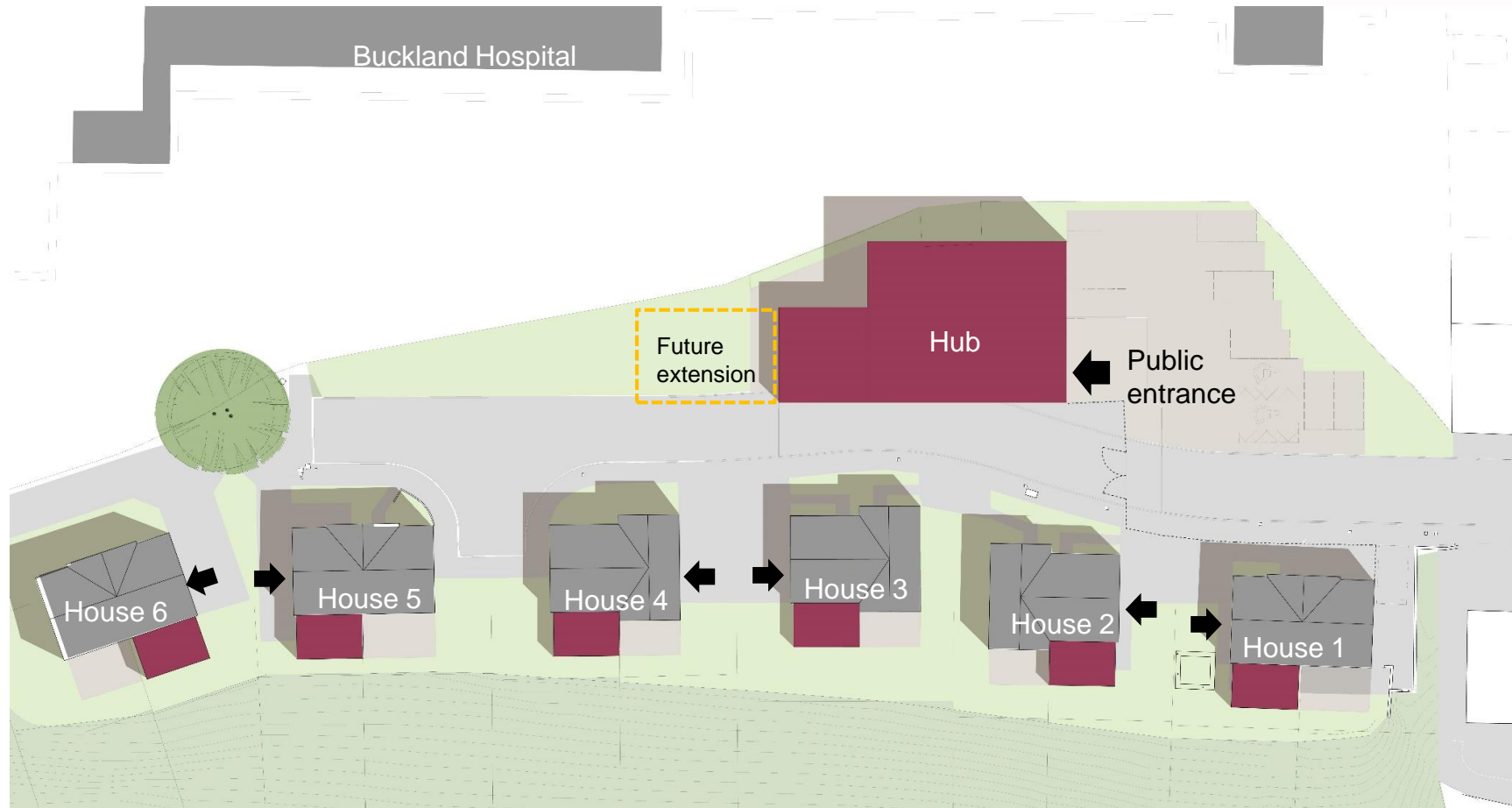
CASCADE

European Regional Development Fund

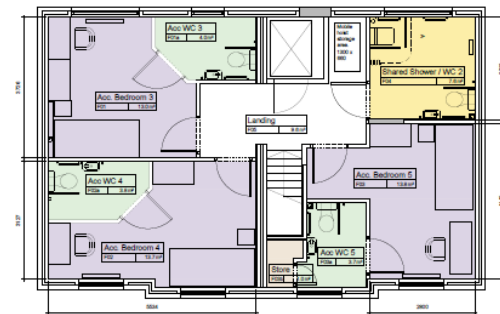


www.cascade-dementia.eu

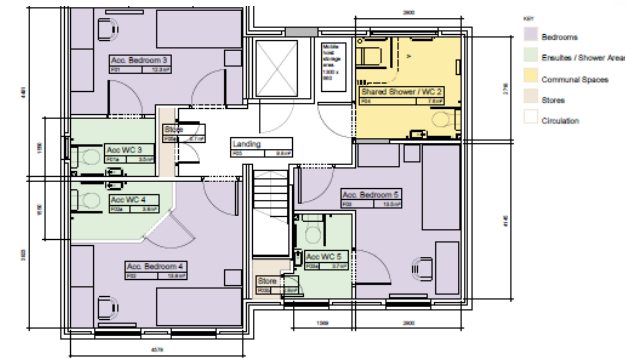
Harmonia



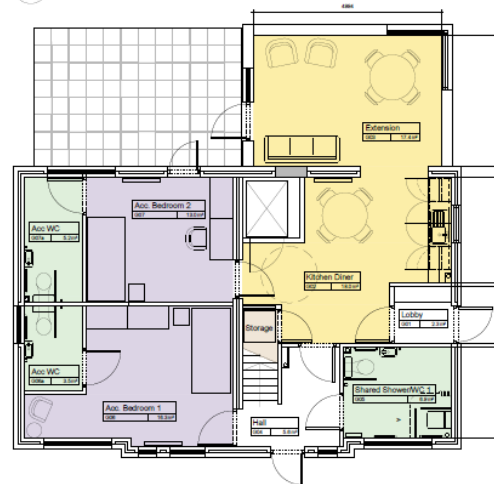
Harmonia – keeping it homely



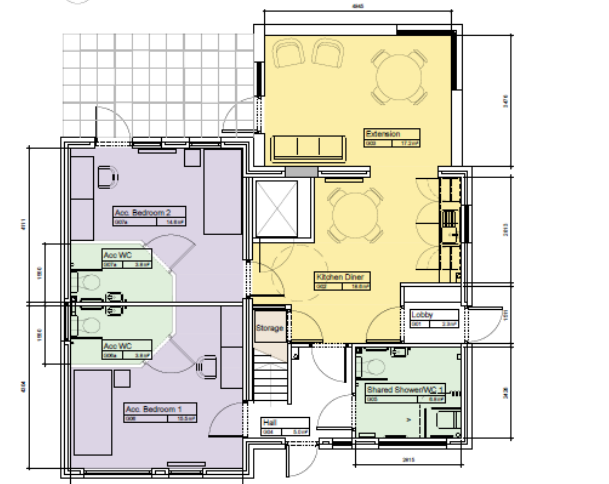
1 House Type A - First Floor
1:50



3 House Type B - First Floor
1:50



2 House Type A - Ground Floor
1:50



4 House Type B - Ground Floor
1:50

Client Sign-Off

Organisation	Position	Name	Signature

Harmonia - Before



Harmonia – During



Interreg 
2 Seas Mers Zeeën
CASCADE
European Regional Development Fund



www.cascade-dementia.eu

Harmonia - After

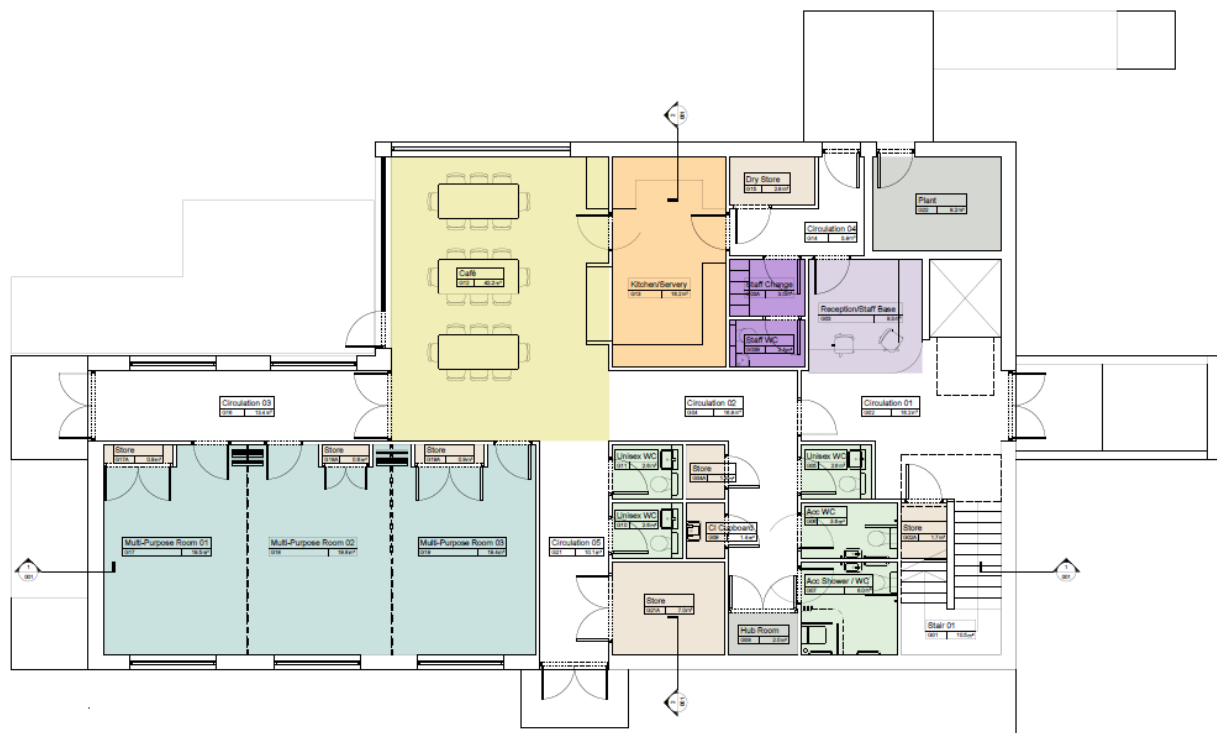


Interreg 
2 Seas Mers Zeeën
CASCADE

European Regional Development Fund

www.cascade-dementia.eu

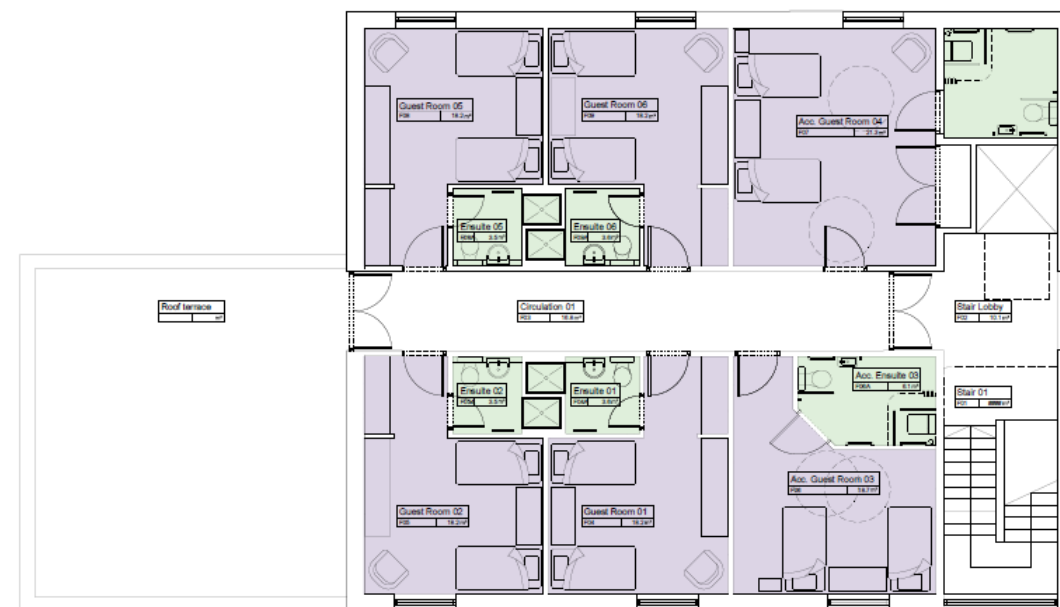
Harmonia – the hub



Interreg 
2 Seas Mers Zeeën

CASCADE

European Regional Development Fund



HMY

www.cascade-dementia.eu

Harmonia – the hub



Harmony House

Interreg 
2 Seas Mers Zeeën

CASCADE

European Regional Development Fund



www.cascade-dementia.eu

Harmony House - Before



Harmony House - During



Interreg 
2 Seas Mers Zeeën
CASCADE

European Regional Development Fund

www.cascade-dementia.eu

Harmony House - After

Interreg 
2 Seas Mers Zeeën
CASCADE



www.cascade-dementia.eu

Harmony House - dining area



Harmony House - bedroom



Harmony House - reception



Interior design



Interreg 
EUROPEAN UNION
2 Seas Mers Zeeën
CASCADE
European Regional Development Fund

Interior design



Interreg 
2 Seas Mers Zeeën
CASCADE
European Regional Development Fund



www.cascade-dementia.eu

BBH – Best Dementia Care Development



Lessons Learned

- Conversion of existing housing stock is cost-effective..
- .. although constrained by original architecture
- Local collaboration created similar design to “experts”
- Using local businesses added value
- Where possible look for synergies with existing processes
- Consider areas for conversation and activities indoors
- Engagement with local community/neighbours